

CRS State Profile: Idaho

This is a profile for communities in your state that are participating in the Community Rating System (CRS). This profile is intended to provide information to the State NFIP Coordinator and others as general information and for those who may wish to increase community participation in the CRS or to improve the CRS classifications of communities that are already participating.

The CRS provides a discount in flood insurance premiums to property owners in participating communities. CRS credit points are given for a wide range of floodplain management activities, and the total of these points determines the amount of the discount.

The data in this report include community CRS classifications as of May 1, 2013. NFIP Insurance policies in force are as of May 1, 2013. Insurance premiums and CRS discounts are estimates for May 1, 2013 based on policies in force on May 1, 2013.

Table 1 shows the number of NFIP flood insurance policies in CRS communities in your state. Table 1 also shows the amount of premium paid for those policies and the savings those property owners will realize from their community's participation in the CRS. Policies for properties within the SFHA in communities in Class 9 and better communities receive a discount of 5% per class. Thus, the premium for a property in the SFHA in a CRS Class 7 community is reduced 15%. The premium for property outside the SFHA is reduced by 10 % for Class 1-6 communities, and 5 % for Class 7-9 communities. Preferred Risk Policies do not receive a CRS discount because they already receive a favorable rate.

Table 1. Policies, Premiums and CRS Savings for CRS Communities in Idaho

POLICIES IN FORCE	PREMIUM	CRS SAVINGS
4,245	\$2,728,951	\$314,612

Table 2 shows the CRS credit each of your communities is receiving for each activity. For a detailed description of each CRS activity, refer to the *2007 CRS Coordinator's Manual*. This manual is available for download at <http://training.fema.gov/EMIWeb/CRS/> or it may be ordered at no cost from:

Flood Publications
NFIP/CRS
PO Box 501016
Indianapolis, IN 46250-1016
317-848-2898

Table 3 shows the current CRS discount being received by NFIP policyholders in your state by community. Altogether, about 5% of all NFIP communities participate, representing about two-thirds of all NFIP policies. If you have communities with a large number of NFIP policies that are not participating in the CRS, you might assist them in applying for the CRS. These discounts are real dollars that are staying in the pockets of your taxpayers.

Additional benefits a community realizes from participation in the CRS include:

1. The CRS floodplain management activities provide enhanced public safety, a reduction in damage to property and public infrastructure, avoidance of economic disruption and losses, reduction of human suffering, and protection of the environment.
2. A community can evaluate the effectiveness of its flood program against a nationally recognized benchmark.
3. Technical assistance in designing/implementing some activities is available at no charge.
4. A CRS community's flood program benefits from having an added incentive to maintain its flood programs over the years. The fact that the community's CRS status could be affected by the elimination of a flood-related activity or a weakening of the regulatory requirements for new development, should be taken into account by the governing board when considering such actions. A similar system used in fire insurance rating has had a strong impact on the level of support local governments give to their fire protection programs.
5. Implementing some CRS activities, such as floodplain management planning, can help a community qualify for certain federal assistance programs.

Please note that the community points for each activity may not add up to the total points shown, and these figures may not be those for which your communities are currently receiving CRS credit. This is because some activity credits are increased by a population growth factor. Also, these credits are those currently effective through May 1, 2013 and do not reflect more recent activity. In addition note that the percent savings will not exactly equal the class discounts of 5%, 10%, etc. since the total premium paid includes the federal policy fee which is not discounted. Also, as mentioned above, Preferred Risk Policies do not receive a CRS discount.

Figure 1 shows average credit for each activity for your state's communities and the national average for each activity. You might use this as a way to target activities for which your communities need assistance.

For example, the nation-wide average for Activity 330, Outreach Projects, is 99 points. If your state's average is significantly lower than 99 points, you might consider helping all of your communities with outreach. If your state's average is significantly higher than 99 points, you might want to put your efforts in some other activity. If one or more of your communities is significantly higher in an activity, it might be used as a model for other communities in your state your that activity.

Figure 2 shows the percentage of communities participating in each CRS activity for your state and for the nation. If your state's communities are low in an activity, you might consider what needs to be done to improve this. For example, some states have statutory requirements for regulatory standards that are eligible for CRS credit. If it is verified that communities within those states are applying a state regulatory standard, all of the communities in that state will receive credit for that standard.

If you have any questions on this report, please contact Cristina Martinez, CFM at 303-443-1695.

COMMUNITY RATING SYSTEM

Activity Descriptions

The following is a brief description of the eighteen (18) activities that receive credit under the Community Rating System. Only the activity numbers shown as (310, 320, ...) appear in the charts and graphs on the following pages.

➤ 300 Series - Public information

- 310 - Elevation Certificates
- 320 - Map Information Service
- 330 - Outreach Projects
- 340 - Hazard Disclosure
- 350 - Flood Protection Information
- 360 - Flood Protection Assistance

➤ 400 Series - Mapping and Regulations

- 410- Additional Flood Data
- 420 - Open Space Preservation
- 430 - Higher Regulatory Standards
- 440 - Flood Data Maintenance
- 450 - Stormwater Management

➤ 500 Series - Flood Damage Reduction

- 510- Floodplain Management Planning
- 520 - Acquisition and Relocation
- 530 - Flood Protection
- 540 - Drainage System Maintenance

➤ 600 Series - Flood Preparedness

- 610 - Flood Warning
- 620 - Levee Safety
- 630 - Dam Safety

Table 2.

Community	c310	c320	c330	c340	c350	c360	c410	c420	c430	c440	c450	c510	c520	c530	c540	c610	c620	c630	Total Points
Ada County	70	140	0	46	30	0	0	36	718	67	80	136	0	0	0	10	0	71	1,674
Bannock County	70	140	4	10	36	18	0	36	550	0	35	0	0	0	0	41	0	71	1,048
Blaine County	75	140	0	0	30	0	0	196	425	63	55	0	0	0	0	0	0	71	1,218
Boise	122	140	34	0	36	0	0	547	164	96	210	136	0	0	0	203	0	65	2,058
Bonner County	56	140	0	5	29	0	13	231	580	0	36	0	0	0	0	40	0	65	1,377
Caribou County	56	0	48	0	20	0	0	0	75	0	45	129	0	0	215	49	0	65	702
Eagle	66	140	101	10	49	59	78	218	756	65	80	0	0	0	200	154	0	65	2,400
Elmore County	56	140	0	0	30	0	0	36	222	0	20	0	0	0	0	0	0	71	612
Garden City	49	0	20	0	38	0	23	87	95	50	80	0	0	0	15	65	0	71	694
Gem County	56	140	36	0	22	45	45	36	192	54	0	165	0	0	0	0	0	65	889
Hailey	66	140	153	0	27	59	0	160	304	114	80	0	0	8	180	120	0	65	1,555
Kellogg	56	140	9	0	22	3	0	311	136	10	100	0	0	0	200	0	0	65	1,052
Ketchum	112	140	105	15	41	49	0	348	280	182	75	119	0	0	268	130	0	65	2,036
Kootenai County	66	140	120	0	57	49	0	177	574	115	80	179	135	13	0	53	0	65	2,134
Moscow	86	140	96	0	55	0	0	355	247	92	104	0	0	0	300	0	0	71	1,554
Mountain Home	60	140	132	0	44	63	0	196	90	84	20	0	0	0	200	0	0	71	1,151
Nez Perce County	56	140	55	0	50	0	0	167	123	71	0	109	0	0	0	31	0	65	878
Pocatello	112	140	119	0	25	0	0	297	135	85	92	0	0	0	30	0	0	71	1,143
Shoshone County	70	140	44	0	15	63	0	642	171	55	50	0	20	4	250	6	0	65	1,595
Sun Valley	86	0	9	0	30	0	25	484	138	32	80	0	0	0	0	0	0	71	1,122
Twin Falls	100	140	98	0	65	59	0	305	126	55	93	0	0	0	0	0	0	71	1,199
Valley County	112	140	20	5	30	0	0	777	179	0	80	0	0	0	0	16	0	71	1,512
Idaho Average Credit	75	140	67	15	36	47	37	269	285	76	75	139	78	8	186	71	0	68	1,346
Idaho % of Communities	100%	86%	82%	27%	100%	45%	23%	95%	100%	77%	91%	32%	9%	14%	45%	59%	0%	100%	
National Average Credit	68	140	99	14	45	47	89	182	291	97	111	129	237	79	201	93	312	63	1,528
National % of Communities	100%	93%	89%	75%	92%	47%	50%	91%	99%	90%	90%	49%	25%	13%	78%	40%	0.1%	91%	

Table 3.			
Community	NFIP Policies	NFIP Premium	CRS Discount
Ada County	327	\$179,153	\$19,789
Bannock County	45	\$30,481	\$2,519
Blaine County	237	\$189,780	\$14,580
Boise	831	\$567,056	\$78,212
Bonner County	245	\$155,088	\$12,721
Caribou County	0	\$0	\$0
Eagle	330	\$191,674	\$25,607
Elmore County	35	\$27,683	\$1,198
Garden City	506	\$334,458	\$13,187
Gem County	15	\$7,636	\$218
Hailey	115	\$64,436	\$7,554
Kellogg	413	\$180,479	\$18,659
Ketchum	205	\$119,734	\$23,446
Kootenai County	289	\$188,593	\$36,212
Moscow	169	\$153,317	\$23,877
Mountain Home	85	\$66,730	\$6,628
Nez Perce County	26	\$16,700	\$644
Pocatello	89	\$56,637	\$5,116
Shoshone County	140	\$87,398	\$12,630
Sun Valley	24	\$17,710	\$1,271
Twin Falls	75	\$55,601	\$5,051
Valley County	44	\$38,608	\$5,493
CRS Communities	4,245	\$2,728,951	\$314,612
Non-CRS Communities	2,816	\$2,023,538	\$0
All Communities	7,061	\$4,752,489	\$314,612

Figure 1. State and National Average Points per Activity

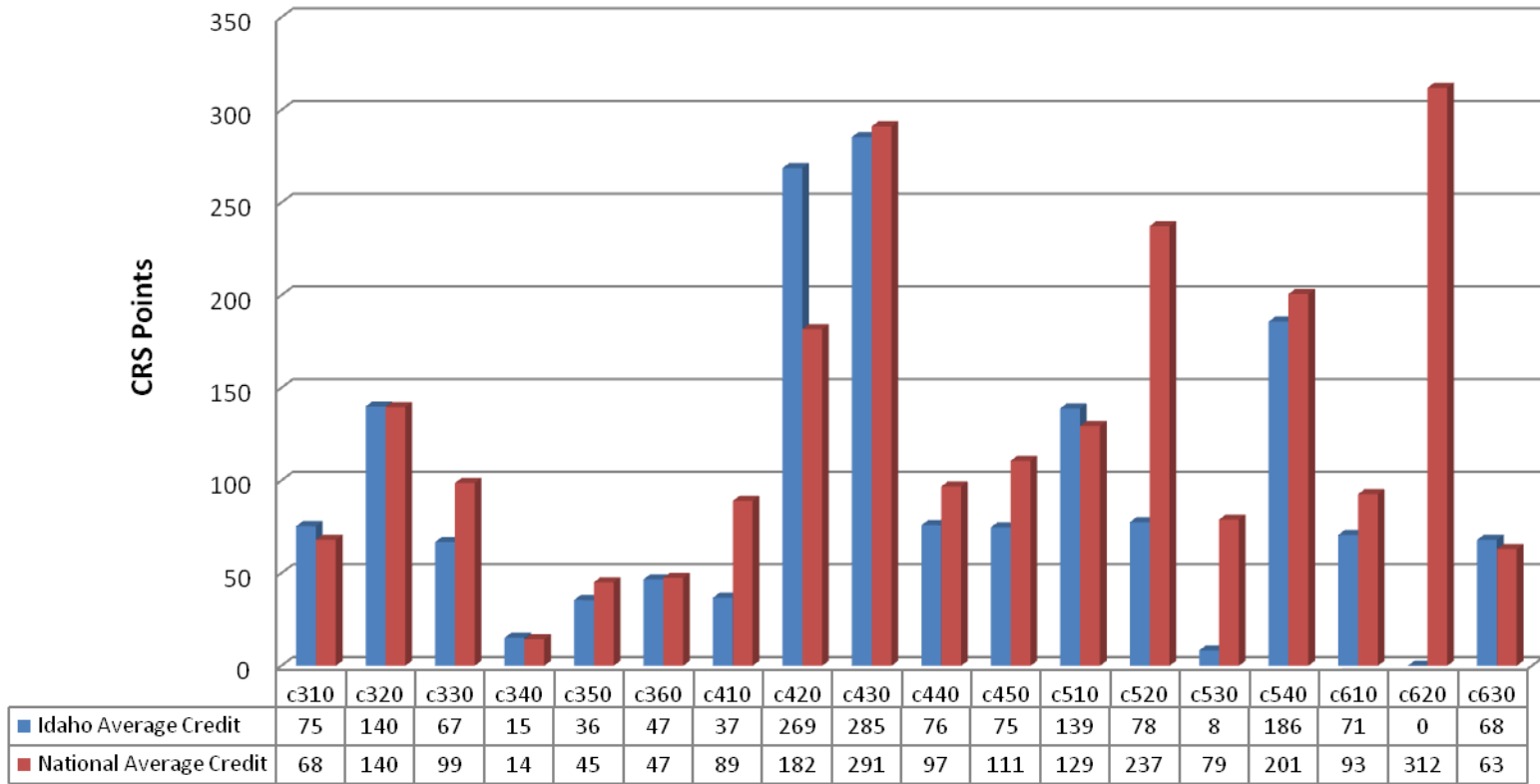
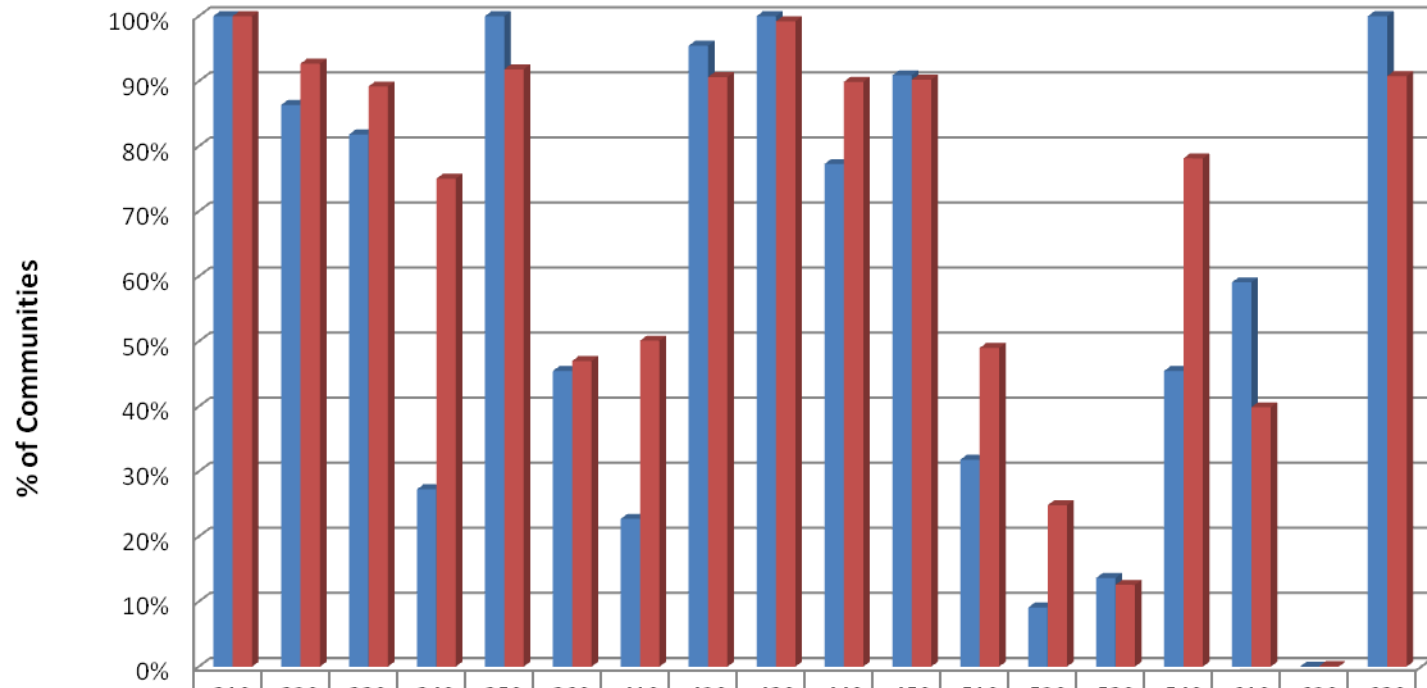


Figure 2. State and National % of Communities for Each Activity



	c310	c320	c330	c340	c350	c360	c410	c420	c430	c440	c450	c510	c520	c530	c540	c610	c620	c630
■ Idaho Average Credit	100%	86%	82%	27%	100%	45%	23%	95%	100%	77%	91%	32%	9%	14%	45%	59%	0%	100%
■ National % of Communities	100%	93%	89%	75%	92%	47%	50%	91%	99%	90%	90%	49%	25%	13%	78%	40%	0.1%	91%